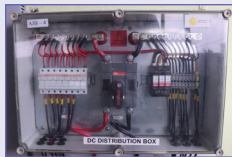


LightLeader (LL1800) Model



DC Control



Battery Bank



LightLeader (LL1800)



"Enjoy superior quality clean energy at your Office."

Benefits of LightLeader (LL1800)

- ◆ Maximize consumption of your own power and reduce your electricity bill.
- ◆ Earn Money by exporting excess power to BESCO/KEB.
- ◆ Compact , Easy to install & Affordable.
- ◆ Increase your property value.
- ◆ Clean & Green energy to reduce your carbon footprint.
- ◆ Protect Electrical and IT Equipment from high surge.
- ◆ Monitoring & controlling using cloud network.
- ◆ Avail tax credits and accelerated depreciation.

◆ Design

◆ Supply

◆ Installation

◆ Commissioning

Technical Detail of LightLeader (LL1800)

Solar Panel: 63 No's
Panel Size: 1.97m(L)x0.99m(W)x0.035m(T)
Max Power per Panel: 315 Wp
Weight per Panel: 21 Kg's
Storage Batteries: 36 No's Lead Acid
Battery Capacity: 120 Ah
Weight per Battery: 35Kg
Power Inverter: 06 No's, 3Kw each
Charge Controller: 4 No's , 80 Amps
LightLeader unit weight: 500 Kg's

Space required on roof to mount panels: 140
Sq. Mt's

Space required for Wall Mounting LL1800
well ventilated room or compartment
admeasuring : 2.45m(L) x 2.0m (W) x 2.5m
(H). DG to be housed in separate location.

Output Power: 240V, 50Hz

Mobile : +91 8861946436
Phone : +91 80 42025173 Ext: 103
E-mail : info@lightleader.co.in
Website : www.lightleader.co.in



Conceptia Software Technologies Pvt. Ltd

#22, 2nd Floor, 100feet Ring Road ,6th Block, 3rd Phase, Banashankari
3rd stage, Bangalore 560085, India.

Conceptia